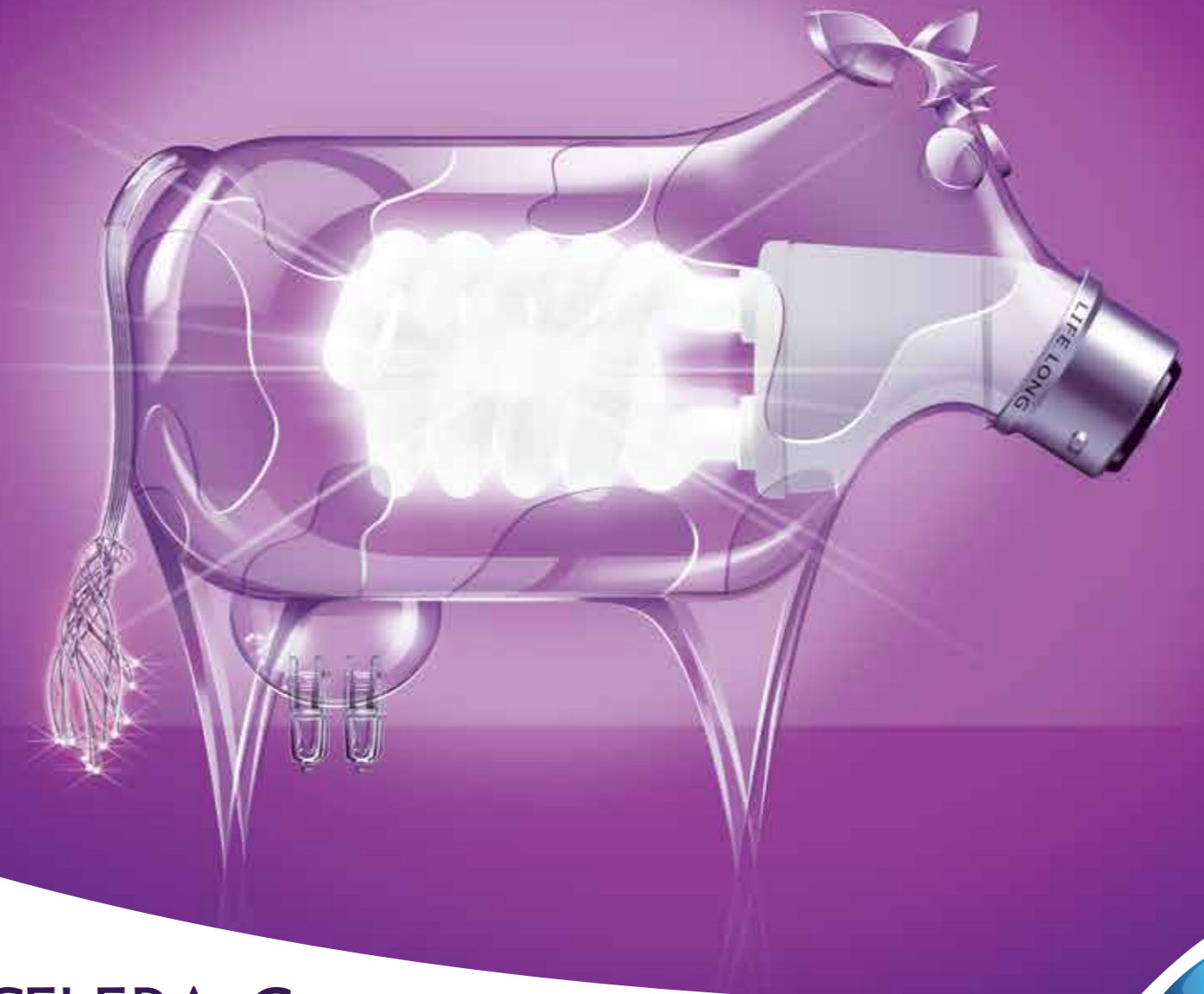


## SWITCH ON LIFETIME PERFORMANCE



150 South Pine Island Road, Suite 270

Plantation, FL 33324

Telephone: +1 (954) 278 3965

Toll free: +1 (888) 512 2175

Email: [NAM@abvista.com](mailto:NAM@abvista.com)

# AXCELERA-C



INTRODUCING

# AXCELERA-C

THE WORLD'S FIRST  
ACCELERATOR FOR COWS...

- Accelerated **calves grow faster**<sup>1,2</sup>
- **Faster rumen development** through earlier solid food intake<sup>2,3</sup>
- Enables **earlier weaning age**, with reduced growth check at weaning

## EASY TO USE

- For best results, offer Axcelera-C as **starter feed replacement from day 3** for a minimum of 3 weeks
- Thereafter, **offer 150g/head/day** placed on top of starter feed until weaning

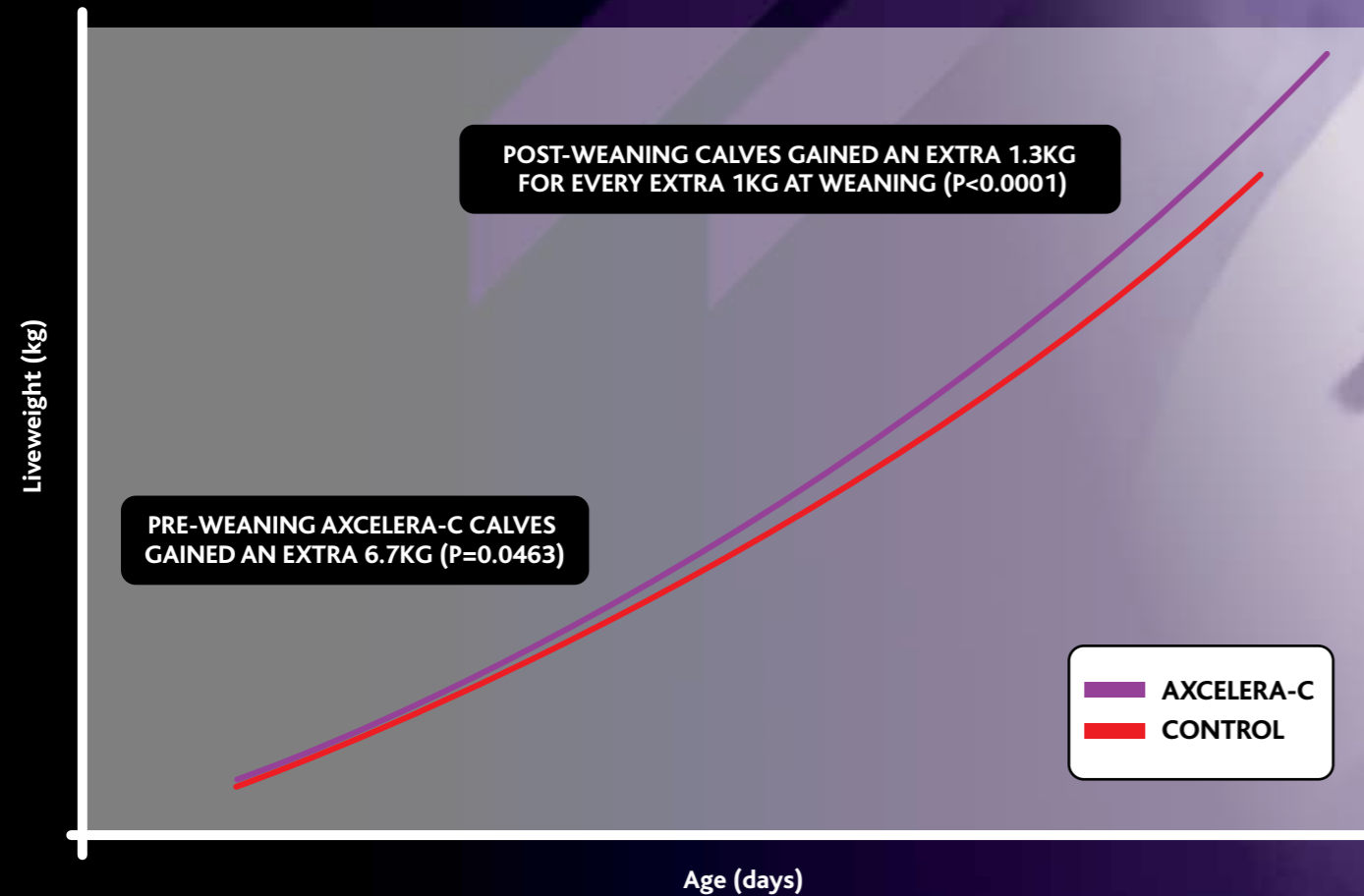


...JUST A HANDFUL OF AXCELERA-C  
EACH DAY UNTIL WEANING  
ACCELERATES A COW'S  
LIFETIME PERFORMANCE

# FASTER GROWING CALVES

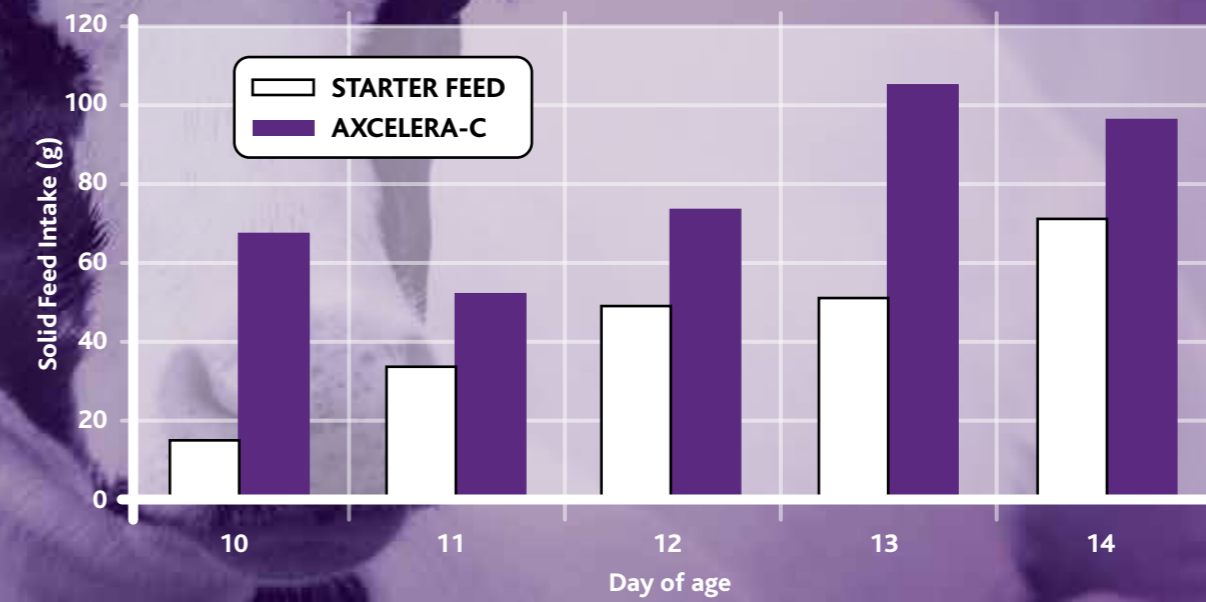
Calves grow faster up to weaning and beyond

## DAIRY CALVES GAIN AN EXTRA 6.7KG IN 60 DAYS WITH AXCELERA-C

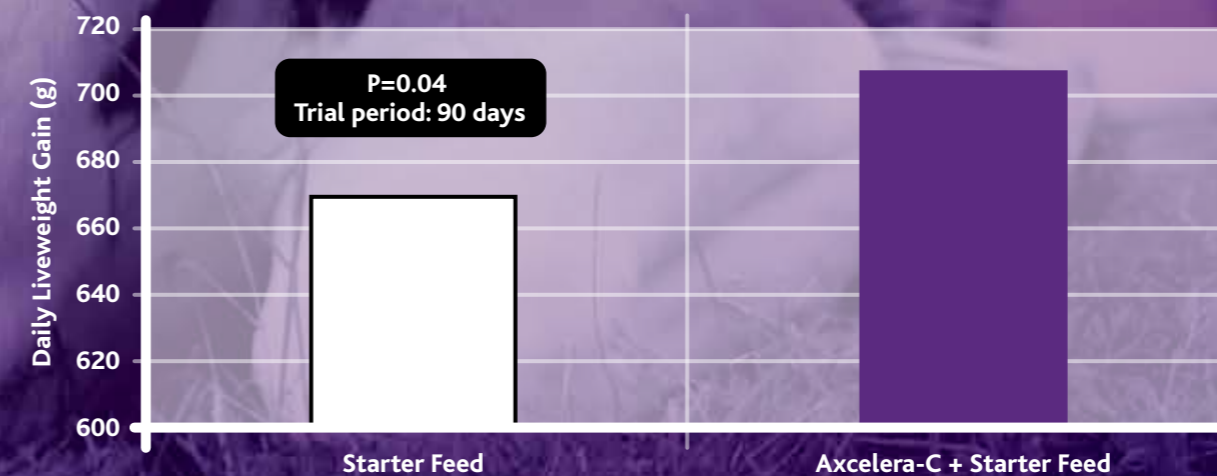


# INCREASED FEED INTAKE AND DAILY LIVE WEIGHT GAIN

## INCREASED EARLY SOLID FEED INTAKE<sup>2</sup>



## ACCELERATED GROWTH – PRE-WEANING AND BEYOND<sup>2</sup>

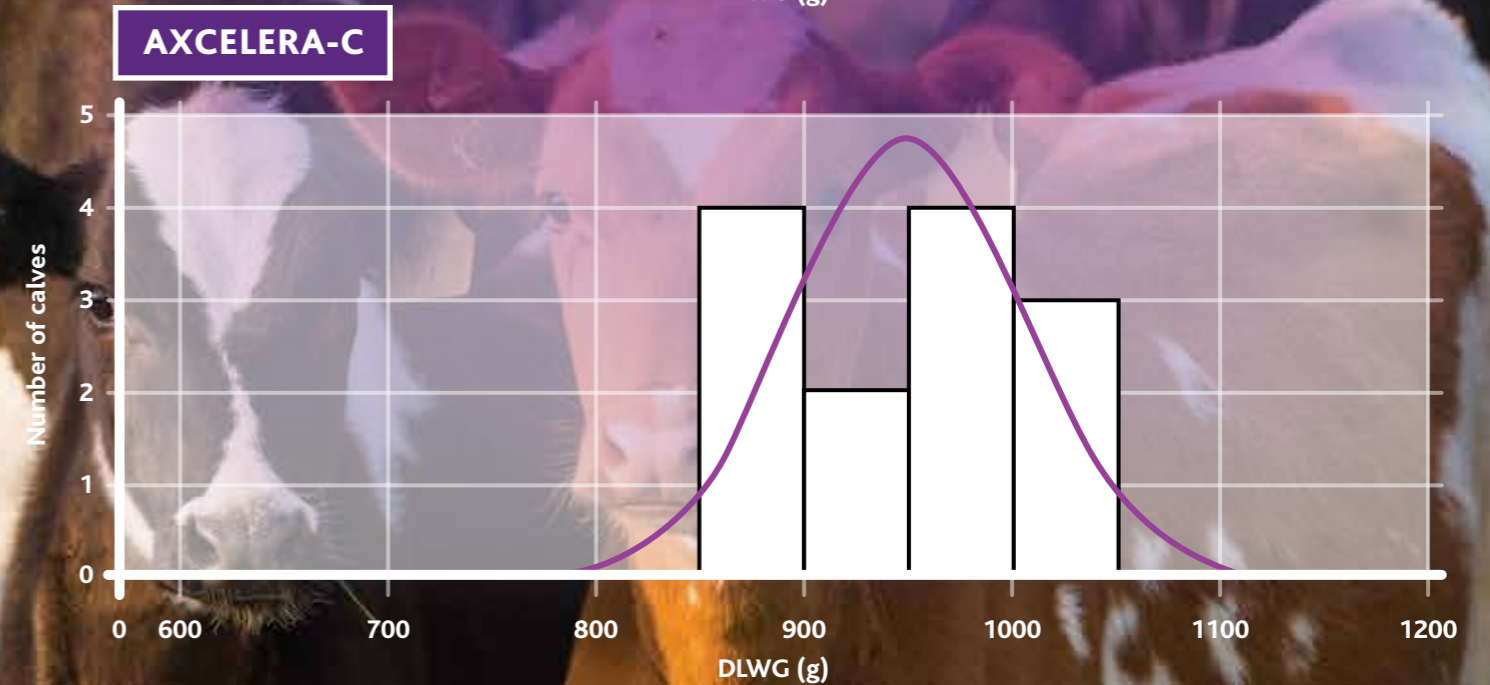
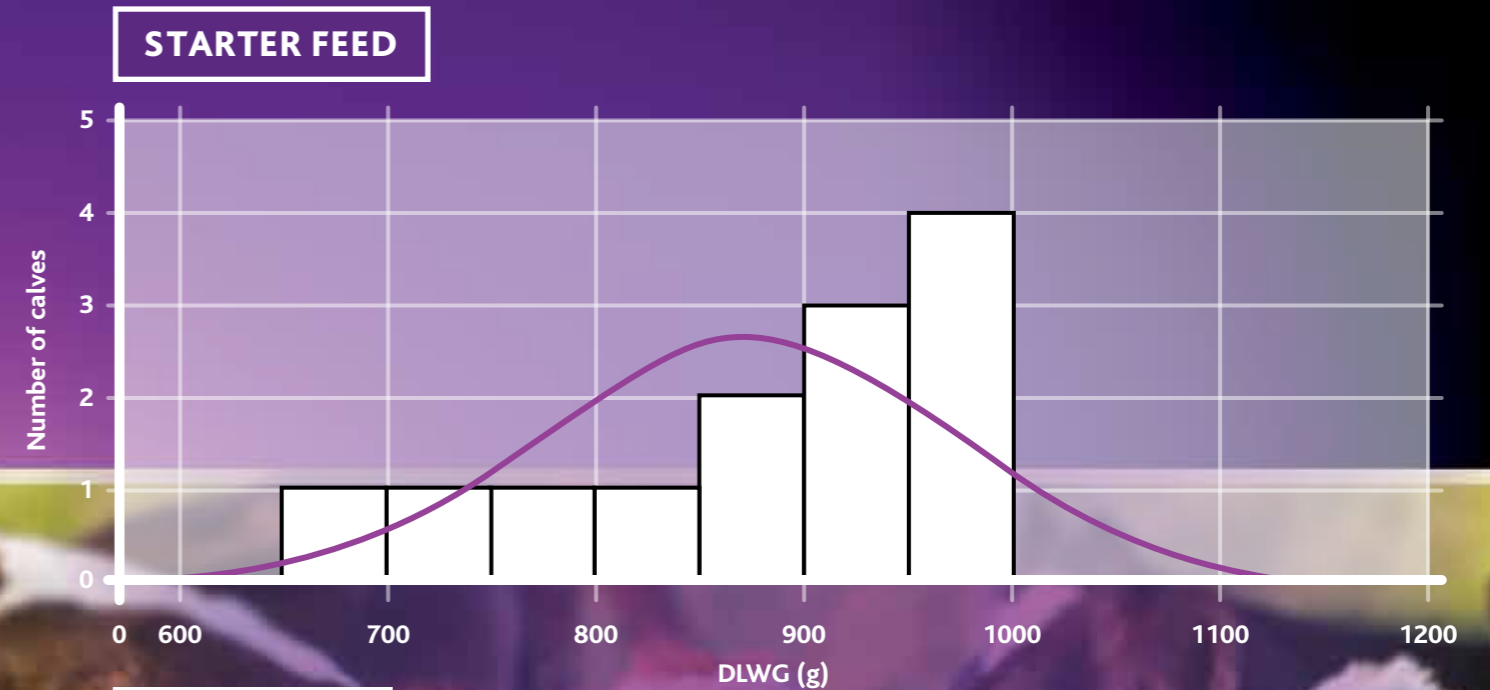


# EASY ROUTE TO ACCELERATED AND HEALTHY CALVES

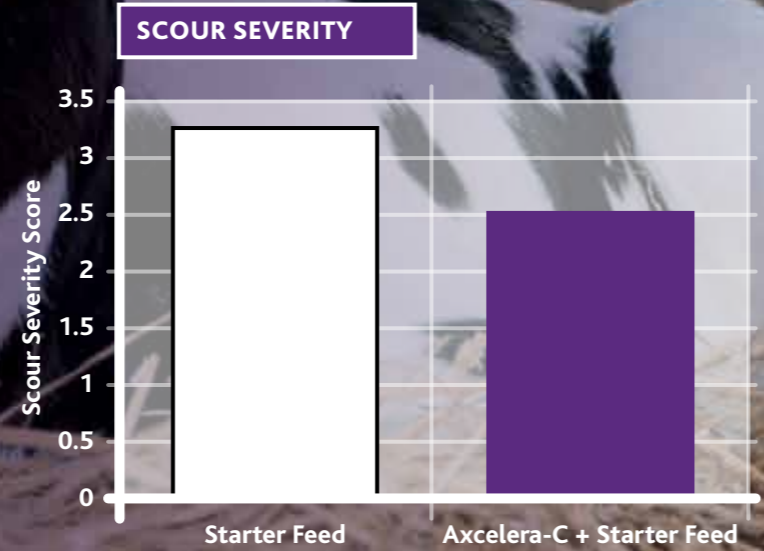
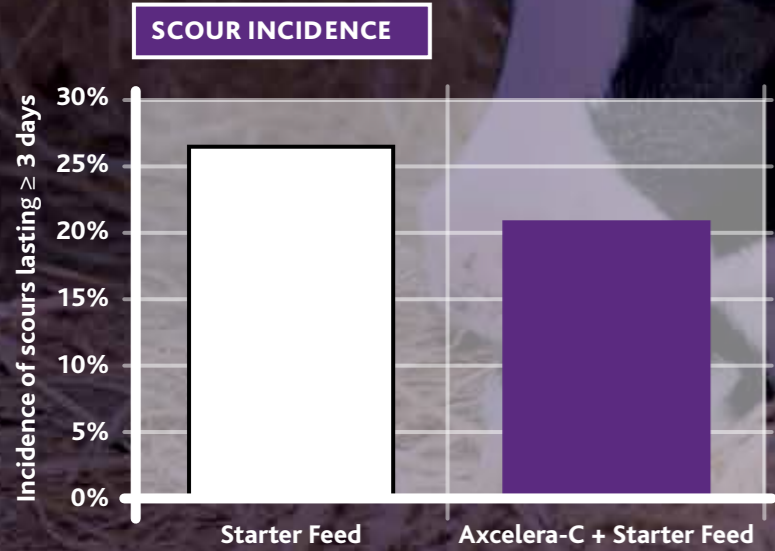
- Accelerated calves grow faster up to weaning<sup>1,2</sup>
- Accelerated cows yield more milk<sup>4</sup>
- Earlier calving improves subsequent milk yield and fertility<sup>5,6</sup>

- REDUCED RISK OF NUTRITIONAL SCOURING
- ENHANCED AND EARLIER SOLID FEED INTAKE
- FASTER RUMEN DEVELOPMENT
- ENABLES EARLIER WEANING AGE
- REDUCED CHECK AT WEANING
- EASY TO USE

# INCREASES CALF DLWG AND UNIFORMITY<sup>7</sup>



## REDUCED INCIDENCE AND SEVERITY OF NUTRITIONAL SCOURS<sup>2</sup>



# PROVEN TO ACCELERATE PERFORMANCE IN DAIRY AND BEEF UNITS

“I ran my own on-farm trial by offering Axcelera-C to half of my calves. The accelerated group of calves clearly grew better and stronger, coped better with on-farm challenges and produced good, big cattle. I have found Axcelera-C to be an easy way of achieving rapid growth and I'm happy to have found a new way of growing calves quickly on my own farm system.”

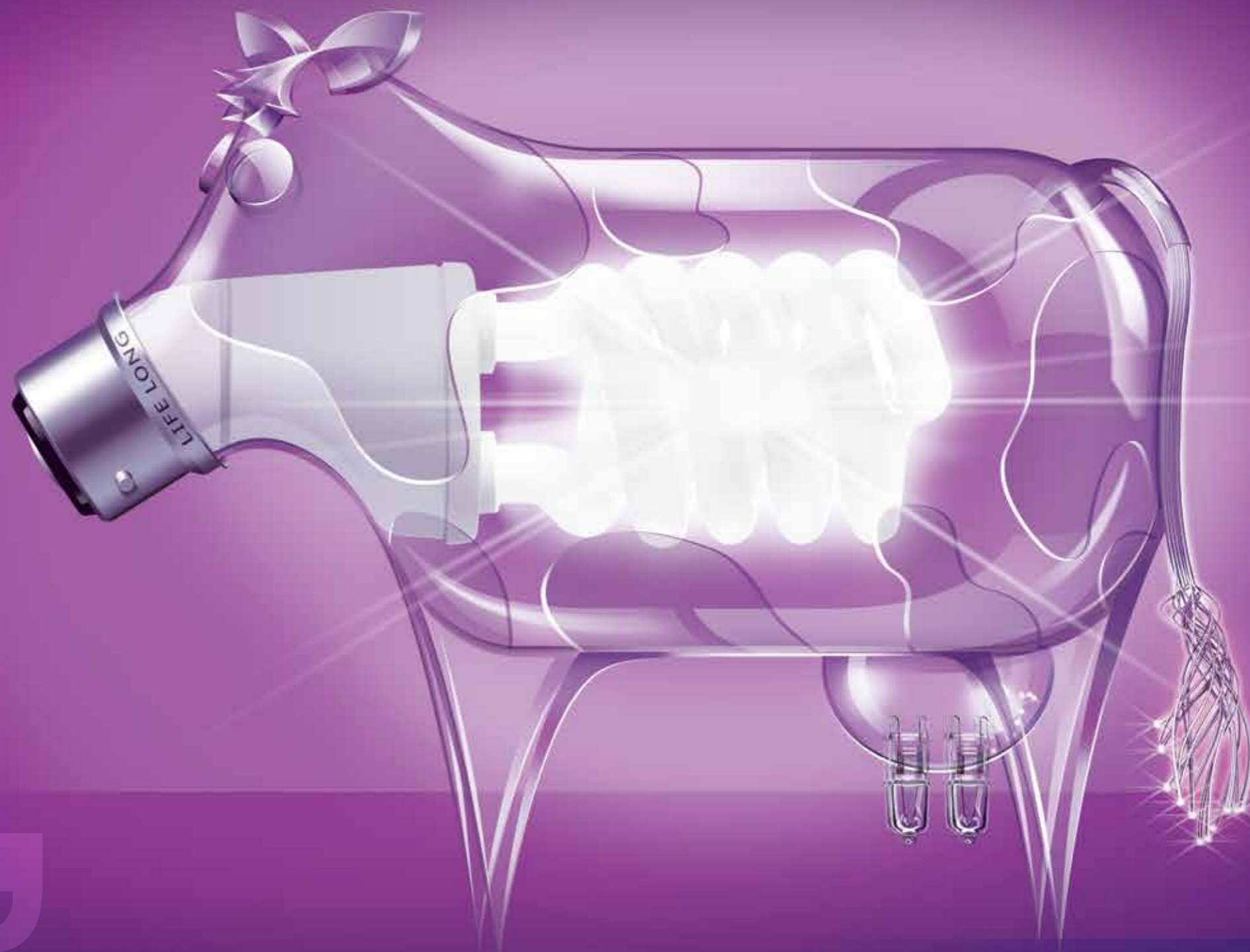
**Gary Allis, Beef producer, Furzehill Farm, Lincolnshire**

“I mixed Axcelera-C in with my starter feed and immediately my heifers showed more interest in their feed. They ate the Axcelera-C aggressively and from an earlier age, and their daily feed intake is clearly greater than with a starter feed alone. These are the signs I look for when giving my heifers the best possible start in life.”

**Rob MacDonald, Kelloe Mains, Berwickshire, 720 cows**

“I have been offering Axcelera-C to my calves for several years now and noticed that their daily intake and weight gain has significantly increased. My calves are consistently in better health and by mixing it in with my starter feed they don't suffer stress through the weaning period.”

**Velky Bor Cooperative, Czech Republic, 500 Holstein**



# AXCELERA-C

## SWITCHES ON LIFETIME PERFORMANCE

- Accelerated calves grow faster<sup>1,2</sup>
- Faster rumen development through earlier solid food intake<sup>2,3</sup>
- Enables earlier weaning age, with reduced growth check at weaning



1. Commercial Farm Trial – AB Neo  
2. A Bach IRTA. AB Neo commissioned study  
3. J Heinrichs. Penn State 2014  
4. Extra 225kg of milk is yielded in 1st lactation for every additional 100g DLWG in 1<sup>st</sup> 2 months of life (A Bach 2012)

5. J Brickell *et al.* 2009  
6. J Cooke *et al.* 2013  
7. AB Neo commercial trial

TRY AXCELERA-C FOR YOURSELF AND SEE THE DIFFERENCE